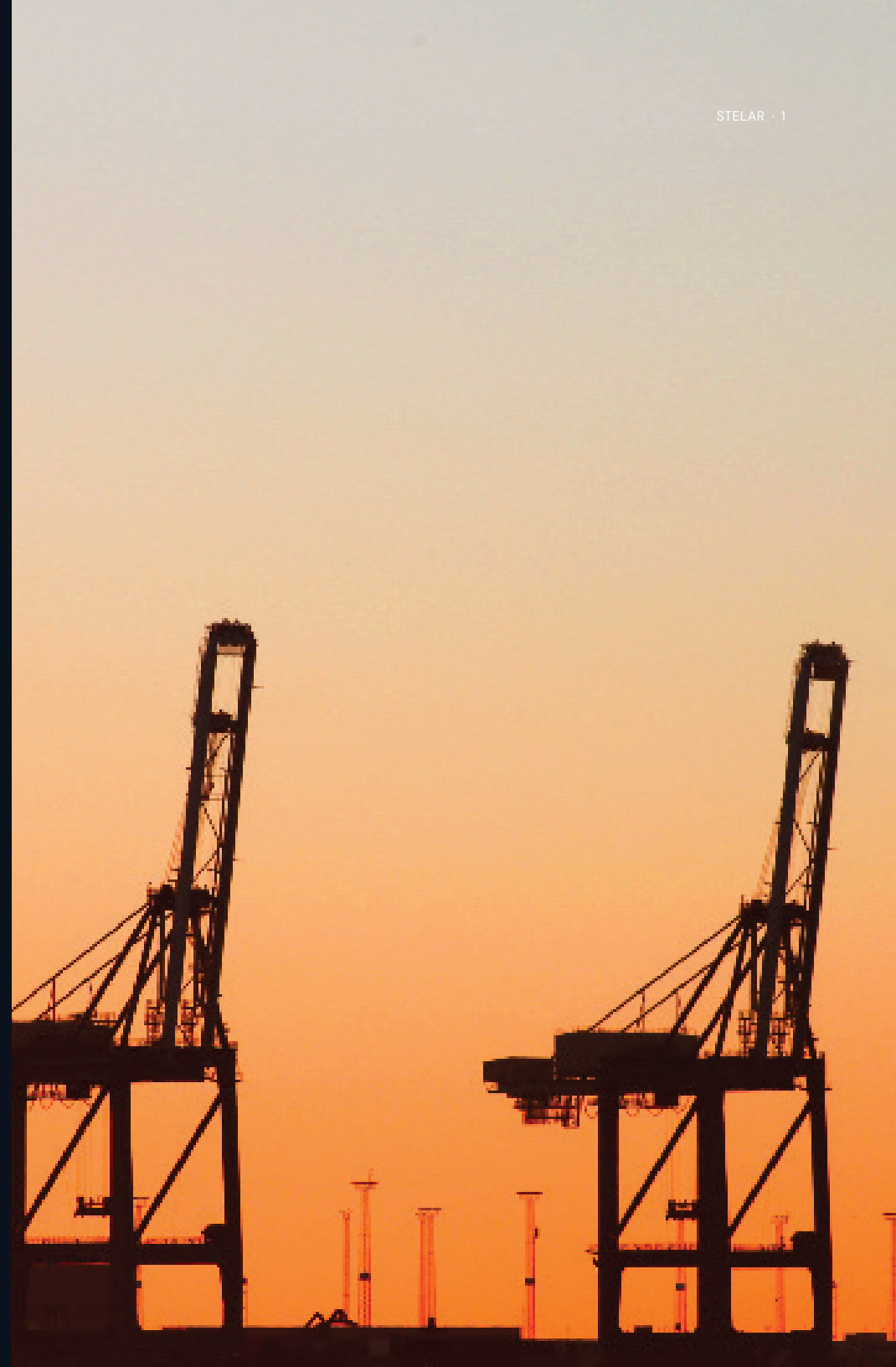
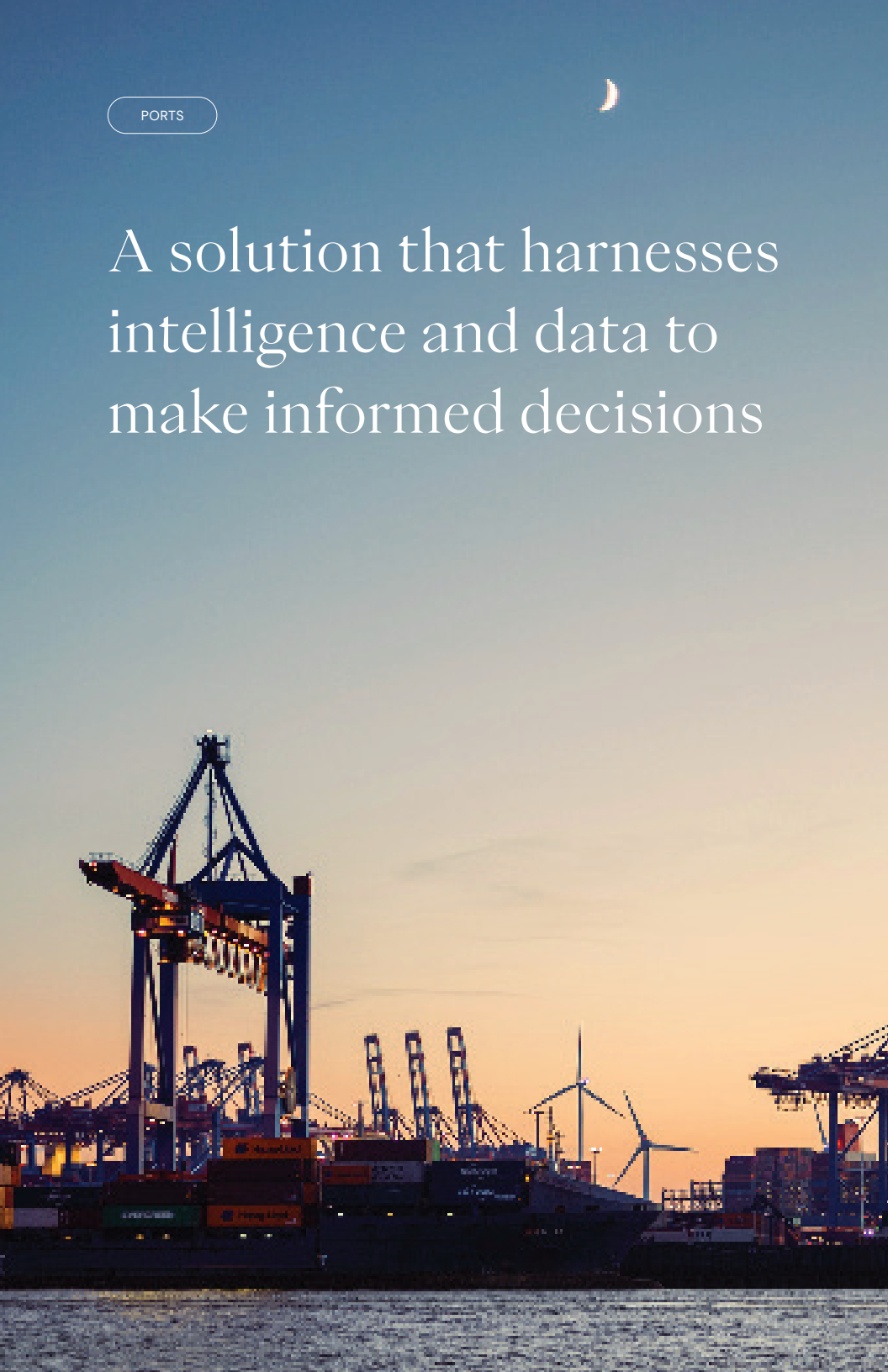




STELAR
PORTS

Stelar transforms
the practice of asset
durability experts through
data intelligence.





A solution that harnesses intelligence and data to make informed decisions

Open and collaborative innovation platform

Maintaining the overall health of your port asset base is critical to meeting the economic, operational, environmental and societal imperatives that affect your organization, and your community.

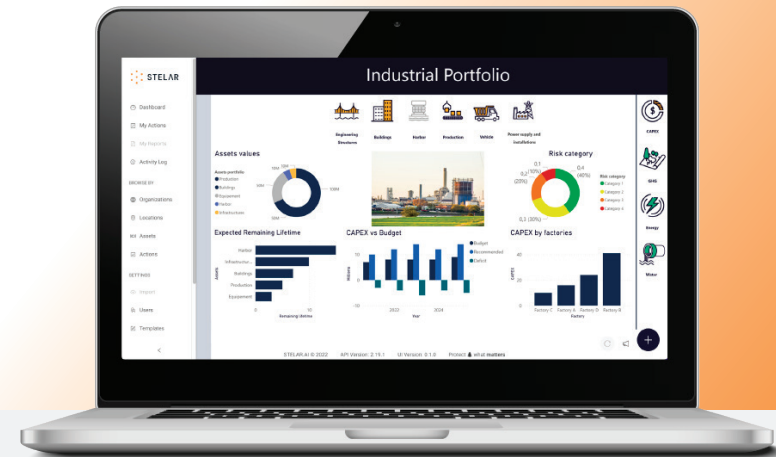
In this context, adopting a technological tool to manage your asset data represents one of the necessary foundations to meet your organizational commitments. A structured, centralized, and intelligent data management tool will allow you to go beyond traditional, and isolated operations. As a result, your asset sustainability and

reliability experts will leverage reliable data to help you implement sustainable solutions for safer, more efficient, and profitable asset operations.

Stelar helps make fast, efficient, and agile decisions to extend the life of your asset portfolio.

It is a digital tool geared towards asset performance, strategic planning, and ESG data with artificial intelligence algorithms. Stelar offers the opportunity to gather, centralize, leverage, and act with secure, high-value data.

Smart management of assets: a practical approach that generates substantial benefits



Stelar's platform

STELAR ACTION CHAIN

This chain represents Stelar's distinctive and essential functions towards improving the health of your assets.

GATHER

Retrieve previous data
Collect data via forms, IoT sensors, and machine systems
Connect existing operational systems

CENTRALIZE

Structure data to facilitate processing
Secure all types of data
Find data easily and quickly

LEVERAGE

Analyze the data through stats, calculations, and aggregations
Process the data through AI tools
Modules offering functional and specialised complements

ACT

Visualize the data through dashboards
Control, export, and transfer data
Predict and alert according to pre-registered parameters
Suggest actions according to past events

HARVEST

Maximize your performance
Protect the environment
Enhance your reputation

Operational benefits

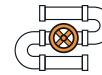
Combining Stelar with the know-how of asset durability experts addresses corporate, operational, and field requirements:

- Supports CAPEX and OPEX investment decisions.
- Provides an overview of asset condition, residual life, and assets at risk.
- Provides insightful financial, environmental, social, and governance (ESG) data.
- Reduces downtime, major breakdowns, and unforeseen expenses.
- Improves the efficiency of maintenance activities by digitizing operations.

Asset types



PORT
ASSETS



PIPING
NETWORKS



RAILWAY
NETWORKS



PRODUCTION
EQUIPMENT



PROCESS
TANKS



BUILDINGS



STRUCTURES



ROADS

Turn your challenges
into strengths!



Tackle and resolve key issues

Durability experts work with Stelar to respond to your specific needs in port asset integrity and reliability.

Here are the key challenges that are addressed and resolved when experts use Stelar:

Unstructured and missing asset management data affects your port's operations.

RECOMMENDED STRATEGIES

- Establish a complete asset inventory.
- Implement a tool capable of structuring and gathering data of every asset in a single repository in a consistent manner that can be used on a long-term basis.
- Enter data and events to build a solid history and approach to asset management.

YOUR BENEFITS

- Start with a clean slate.
- Stop relying on periodic or ad hoc independent studies.
- Facilitate the transfer and conservation of critical knowledge from a handful of experts to all levels of the organization.
- Develop a data entry structure covering all potential stakeholders (experts, consultants, etc.).
- Gather and access all your asset data in one single place.
- Build a structured data repository geared towards perennial asset management.

Tackle and resolve key issues

When dealing with operators, it is imperative to know the condition of your assets to minimize the chances of unexpected incidents, downtime, or interruptions.

RECOMMENDED STRATEGIES

- Know the actual health condition of each above or underwater asset.
- Create a workflow to understand and consistently track asset health.
- Harness functionalities developed explicitly for the port industry, including vector referencing for dock components.

YOUR BENEFITS

- Get a comprehensive and centralized overview that will support your port's operation in the short, mid, and long term.
- Share knowledge to enable the operator to better adapt to the context and potential works.
- Maintain partnership and trust.
- Expedite your decision-making process.

Tackle and resolve key issues

Without a clear view of what needs to be done and when, operators will bear the impact of downtime, and you will pay more because of unforeseen, ill-planned works.

RECOMMENDED STRATEGIES

- Forecast your investments and understand the costs and risks of postponing works to avoid downtime.
- Establish a balance between predictive and scheduled maintenance.
- Develop a roadmap for major rework.
- Align your asset management strategy with your real priorities.
- Experts will use Stelar to prioritize the most critical or lucrative assets that you literally can't afford to lose.

YOUR BENEFITS

- Minimize downtime and optimize asset life span.
- Get away from last-minute corrective work, and focus on planned, well-prepared projects.
- Plan asset management budgets and funding more comprehensively and cost-effectively.
- Maintain a constant level of service and reliability.
- Streamline procurement by identifying needs and adapting strategy to lead time.
- Establish objective asset repair and replacement criteria relevant to your governance and operational/field experience.

Tackle and resolve key issues

Operators and other stakeholders have a big impact on your port administration's asset strategy, social acceptability, and environmental footprint.

RECOMMENDED STRATEGIES

Facilitate operator buy-in and commitment. As a collaborative tool with multi-stakeholder capabilities:

- Stelar will serve as a support to present and explain your port asset management vision and approach.
- Provide the ability to integrate operational assets for longshoring.
- A broader asset base will provide a more accurate picture and offer a tangible communication tool between the operator and the port administration.

YOUR BENEFITS

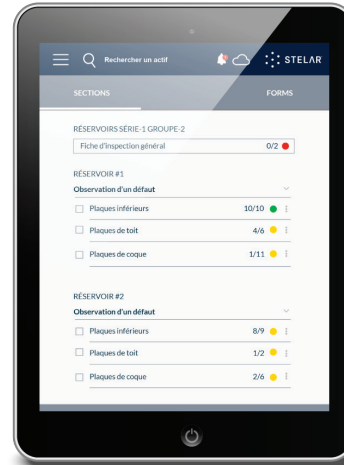
- Strengthen your positioning.
- Attract new business to existing wharves by ensuring efficient operations.
- Establish a proven sound governance track record to help attract and secure new projects and investments.
- Show your community that all stakeholders take concrete steps to reduce your port's environmental footprint.
- Compound the benefits of a collaborative asset management approach.

A powerful tool that
combines expert
knowledge and data
intelligence



Bridge the gap from data to decision making

The platform provides a 100% digital framework to support all your asset survey operations. Through our mobile application, your inspectors can record observations via dynamic forms customized by asset integrity and reliability experts. This organized and structured process results in automated reports that accelerate informed decision making.



Mobile application

Key features of the platform:

- Dynamic form engine
- Asset structure hierarchy
- iOS and Android mobile application
- Dashboards of collected data
- Data import/export
- Automated statistics and reports
- Automated storage and secure backup

Durability experts X Stelar: anticipated benefits

20 to 25%

Increase in the lifespan of your assets

50%

Hours saved on capital investment and asset maintenance budget preparation

10%

Savings on maintenance and inspection costs

2% to 6%

Improvement in equipment uptime

Specialized modules that leverage your data

In addition, asset durability experts develop powerful modules:



Module designed by
Norda Stelo Solutions

CAPEX MODULE

This module facilitates project management at the asset portfolio level. It allows organizations to plan, approve and track the entire CAPEX and OPEX investment process. It helps to prioritize the integrity related projects within the project portfolio based on the benefits and performance indicators that are targeted.

HEALTH INDEX AND ASSET LIFE MODULES

These modules help assess asset lifespan and provide a view of health status. This data can serve to generate an alert anticipating potential failures.
(Modules under development)

ENVIRO MODULE

The module makes it possible to measure the environmental outcomes produced (p.ex.: GHG emissions, due to the fabrication of the asset or its operation) or used (e.g. water or energy consumptions) by each asset in order to relate this to its health condition.
(Modules under development)



PUSH
DECISION-MAKING
FORWARD